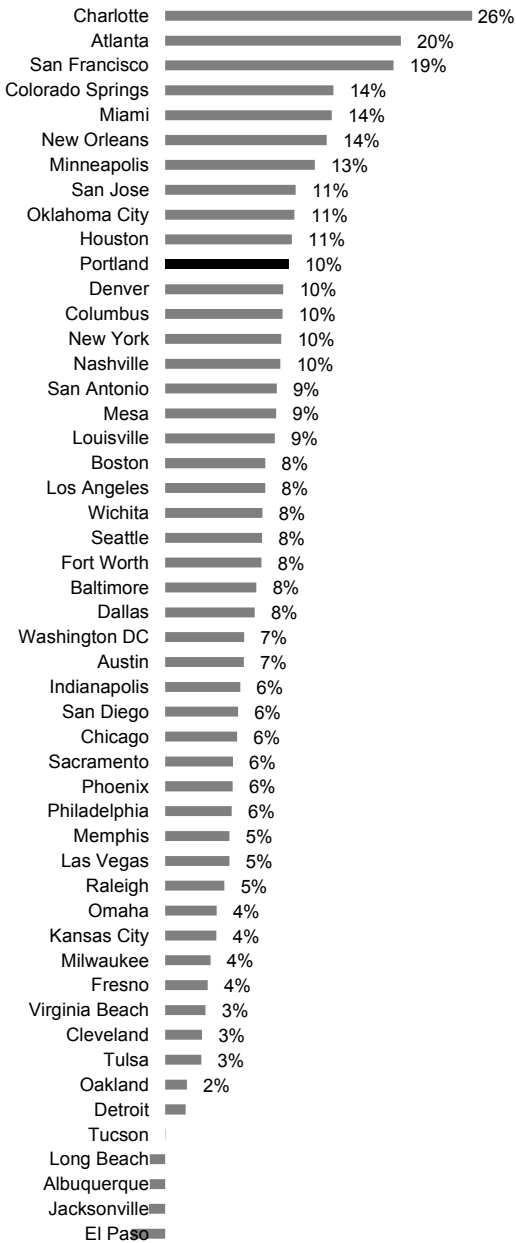


**Employment Growth by City**

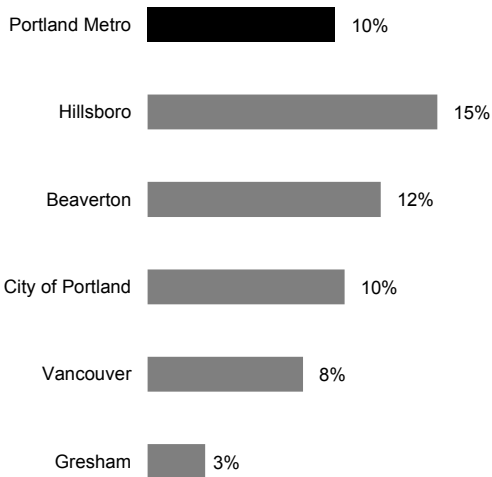
2010 to 2014 : 50 Largest US Cities



onthemap.ces.census.gov

**Employment Growth by City**

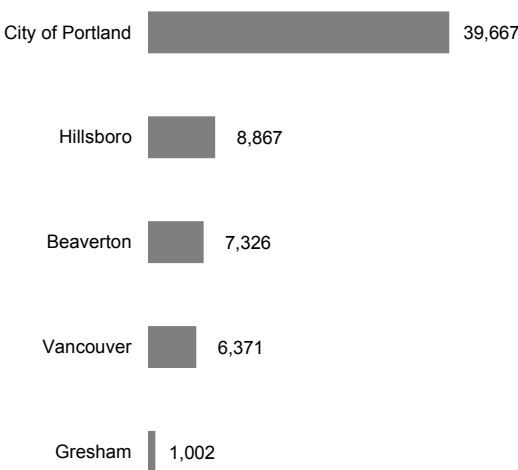
2010 to 2014



onthemap.ces.census.gov

**Employment Growth by City**

2010 to 2014

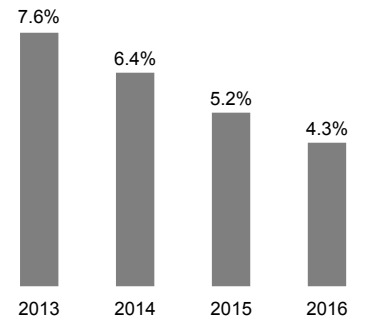


onthemap.ces.census.gov

**EMPLOYMENT TRENDS**

**February Unemployment Rate**

Portland Metro - Seasonally adjusted



**Employment Growth**

Portland Metro

**Feb 2016**      **1,126,200**  
Growth            +34,600 (+3.2%)  
Year-over-year

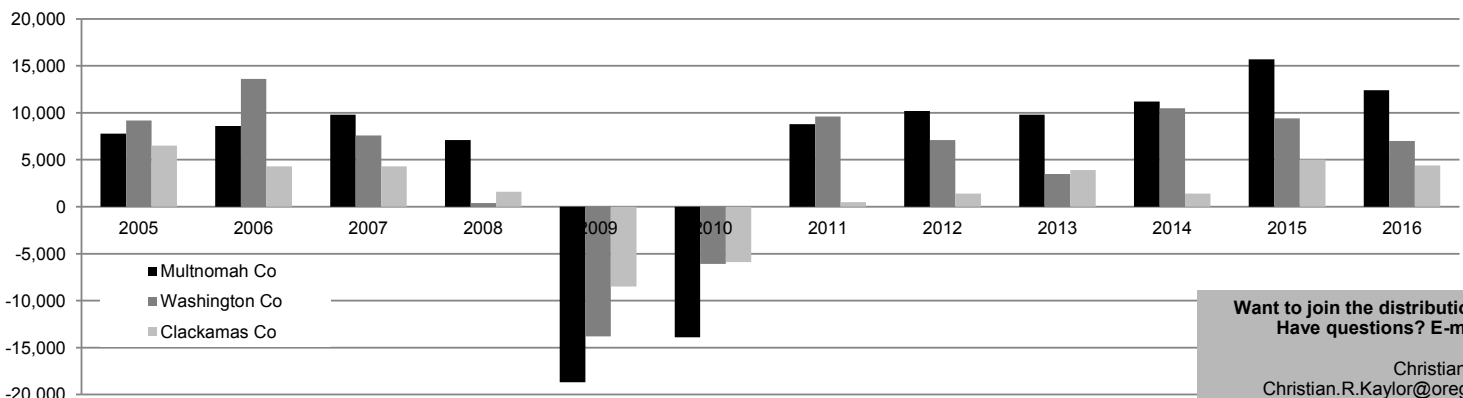
**Industry Growth**

Portland Metro - February  
Year-over-year growth (percentage)

Information	+1,800 (+7.6%)
Healthcare & Social Assistance	+5,900 (+4.5%)
Construction	+2,200 (+4.1%)
Financial Activities	+2,600 (+4.0%)
Professional & Business Services	+6,500 (+3.9%)
Leisure & Hospitality	+3,800 (+3.5%)
Transportation & Warehousing	+1,100 (+3.2%)
Manufacturing	+2,000 (+1.7%)

**Employment Growth by County**

Year-over-year : 2005 to February 2016



**Want to join the distribution list?**  
**Have questions? E-mail me!**

Christian Kaylor  
Christian.R.Kaylor@oregon.gov