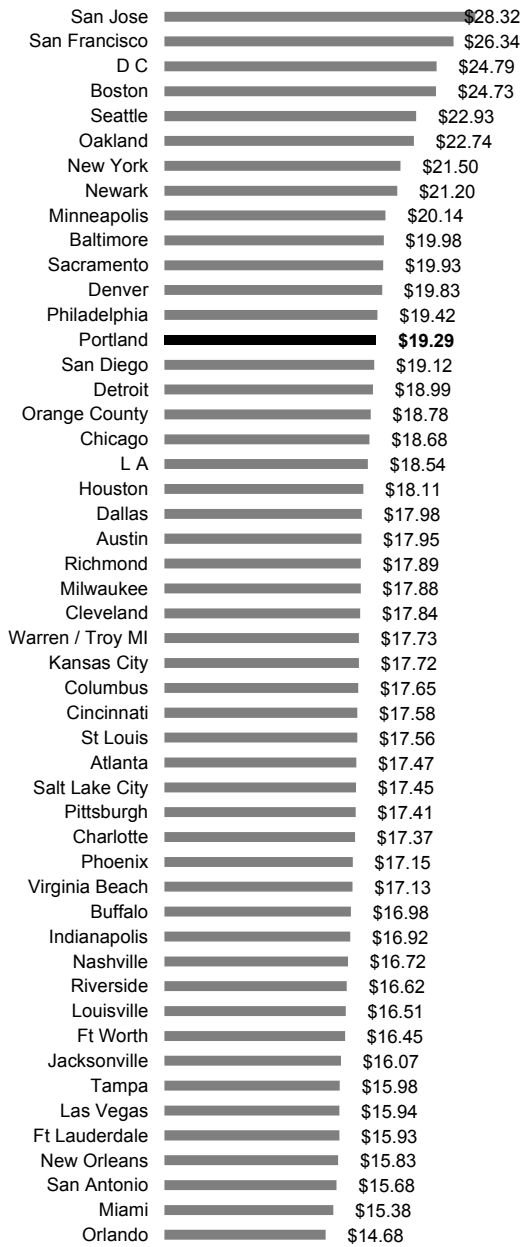


**Median Wage by Metro**

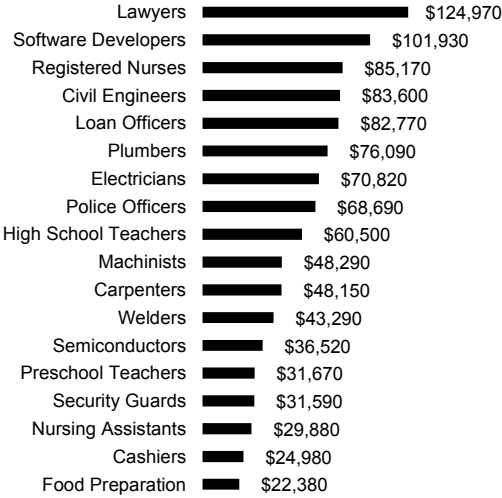
2015 : 50 Largest US Metros



[www.bls.gov/oes/current/oesrcma.htm](http://www.bls.gov/oes/current/oesrcma.htm)

**Average Annual Wage by Occupation**

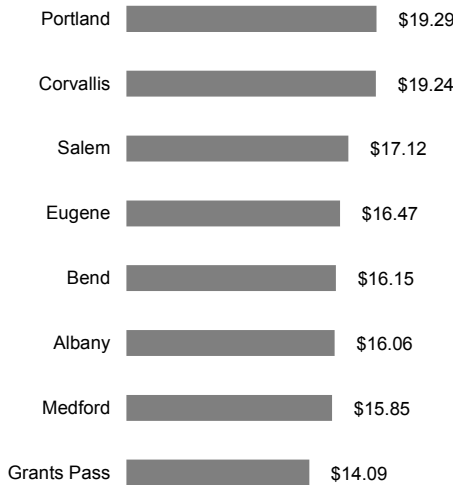
2015 Portland Metro



[www.bls.gov/oes/current/oes\\_38900.htm](http://www.bls.gov/oes/current/oes_38900.htm)

**Median Wage by Oregon Metro**

2015

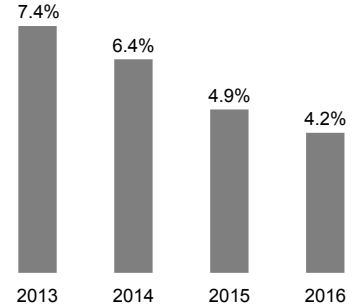


[www.bls.gov/oes/current/oesrcma.htm](http://www.bls.gov/oes/current/oesrcma.htm)

**EMPLOYMENT TRENDS**

**March**  
**Unemployment Rate**

Portland Metro - Seasonally adjusted



**Employment Growth**

Portland Metro

**March 2016**    **1,132,100**

Growth            +35,300 (+3.2%)  
Year-over-year

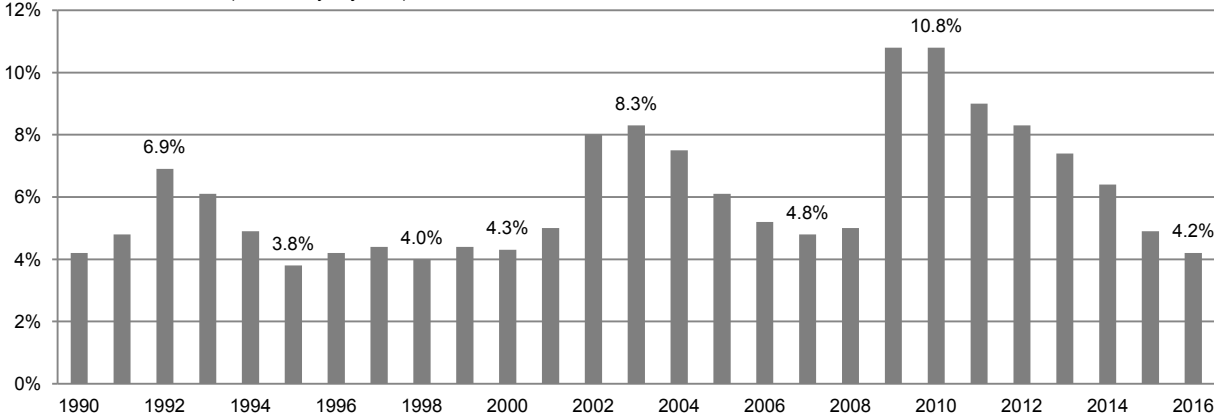
**Industry Growth**

Portland Metro - March  
Year-over-year growth (percentage)

Information	+2,000 (+8.4%)
Healthcare & Social Assistance	+6,600 (+5.0%)
Financial Activities	+3,200 (+4.9%)
Leisure & Hospitality	+4,100 (+3.7%)
Construction	+2,000 (+3.7%)
Professional & Business Services	+5,800 (+3.5%)
Manufacturing	+2,500 (+2.1%)
Transportation & Warehousing	+500 (+1.5%)

**Unemployment Rate Portland Metro**

March 1990—March 2016 (Seasonally adjusted)



**Want to join the distribution list?**  
**Have questions? E-mail me!**

Christian Kaylor  
Christian.R.Kaylor@oregon.gov