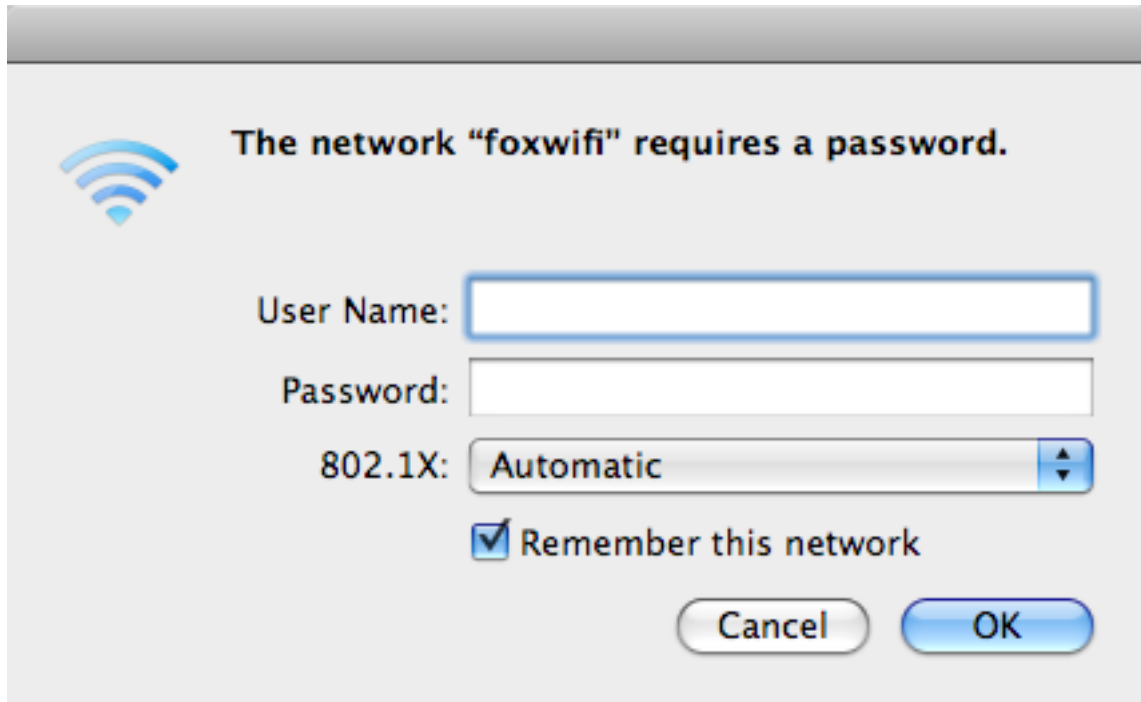


If you are trying to connect to the new **foxwifi** on the Newberg Campus then you will be prompted with the following screens:



This is your George Fox account.

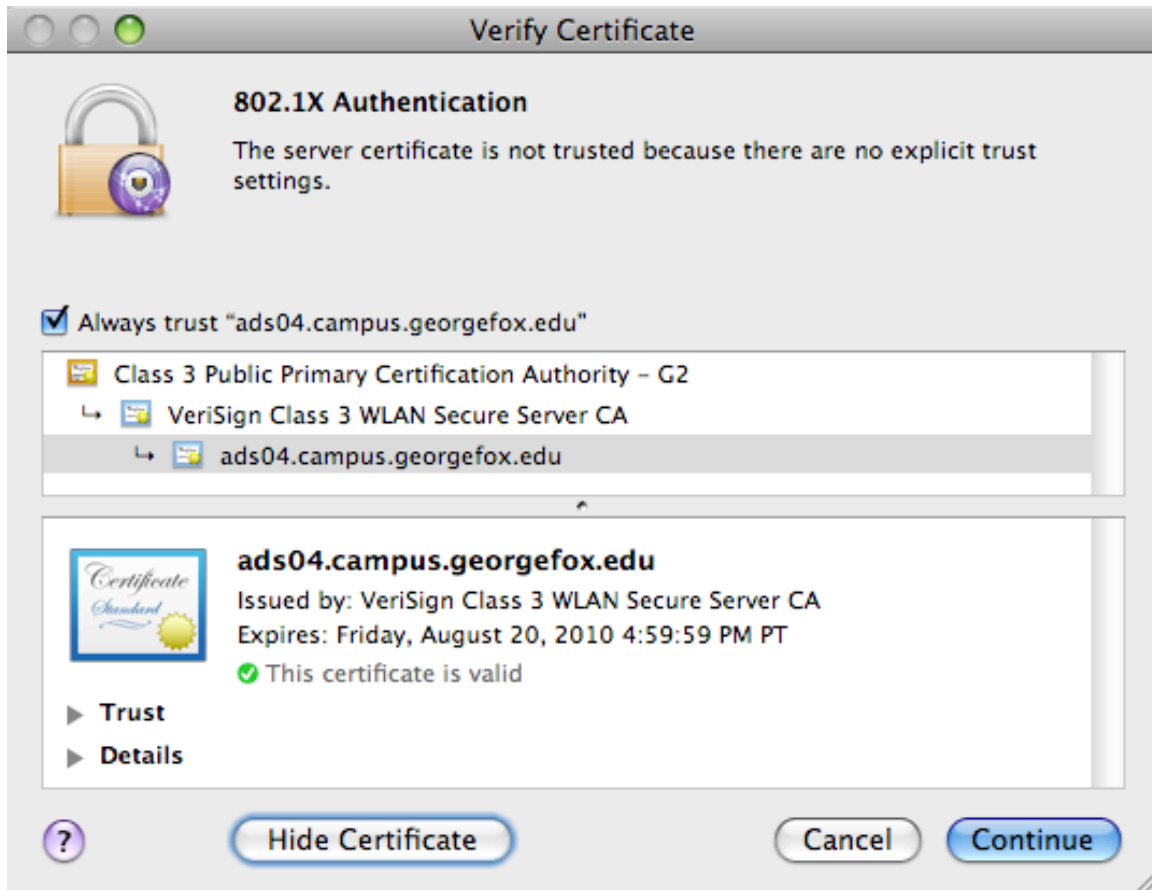
You will then see this request to verify Certificate.



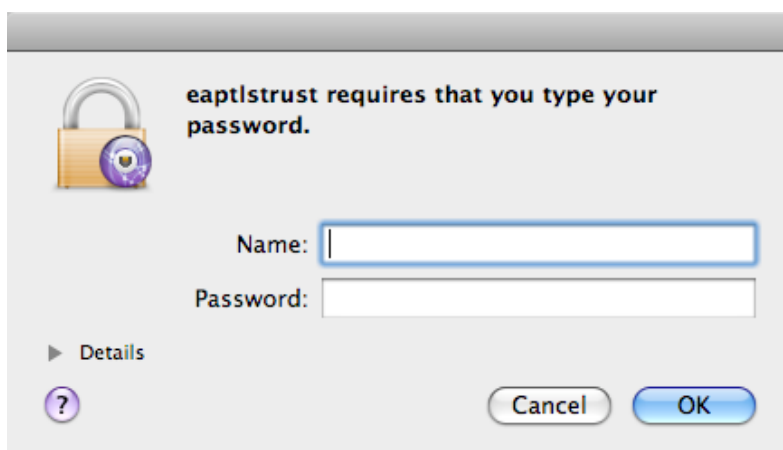
You can just choose Continue and you will be fine for the current use of WiFi, however, on other parts of campus you will probably be prompted with this request again.

If you would like to permanently verify the Certificate then Choose **Show Certificate**

You will see this screen option which gives you information about the actual certificate that you don't really care about, but you do want to choose the check box at the top Always trust "ads04.campus.georgefox.edu" so that you never have to deal with this again.



Select **Continue**



Now you will have to enter your Computer's Name and Password. And this should take care of your WiFi setup.